

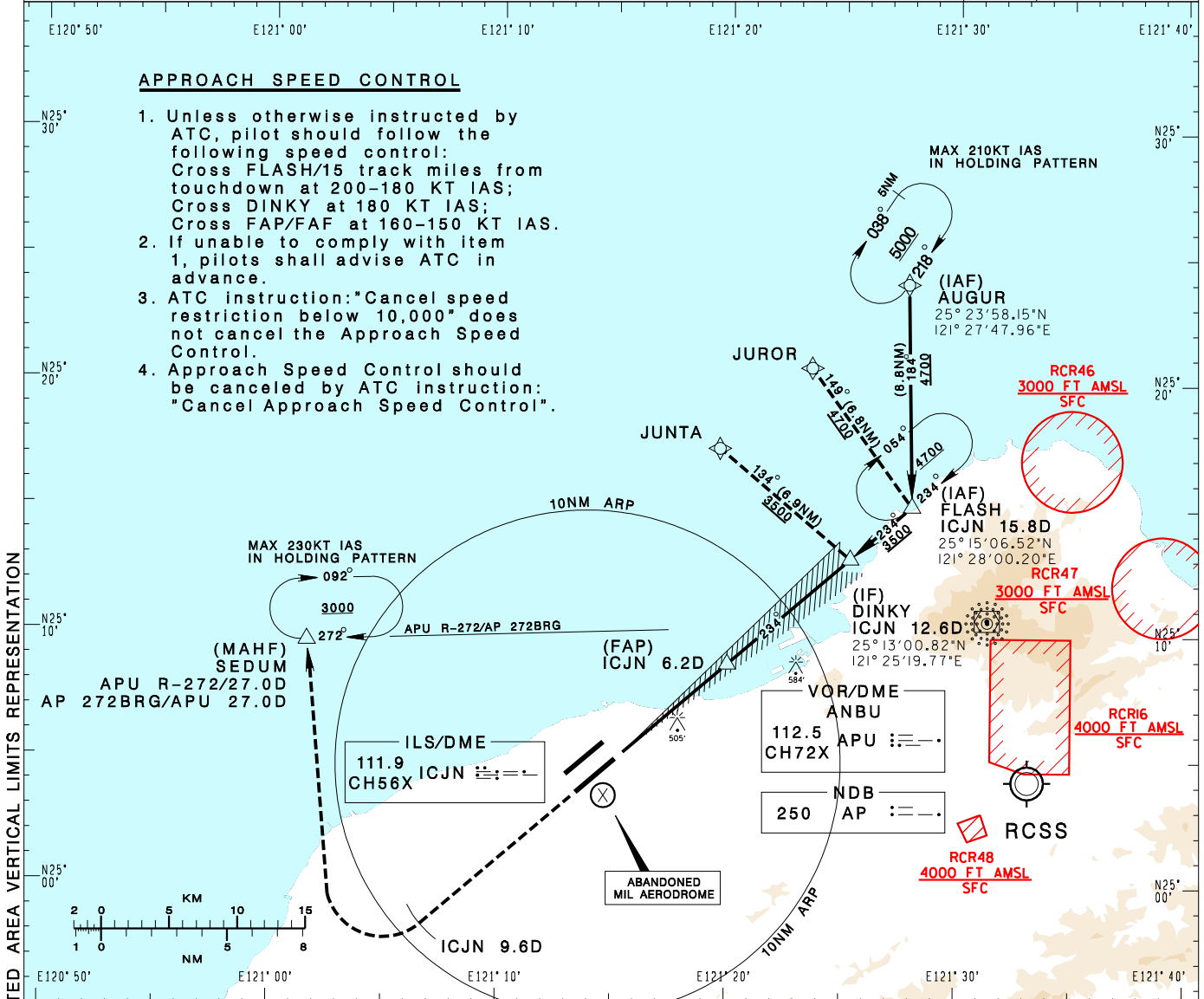
**臺灣桃園國際機場**  
TAIPEI/TAIWAN TAOYUAN INTL AD

**RCTP**  
**ILS RWY23L (CAT II)**

TAIPEI APP 125.1 128.5 125.6	TAIPEI TWR 118.7 129.3	ATIS 127.6	VAR 5° W 		
Apt Elev: 108'	Rwy23L DTHR Elev: 96'	Trans Level: FL130			Trans Alt: 11,000'
BEARINGS ARE MAGNETIC; DISTANCES ARE NAUTICAL MILES; ELEVATIONS, HEIGHTS IN FEET					

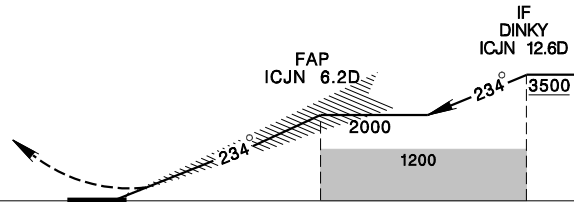
**APPROACH SPEED CONTROL**

- Unless otherwise instructed by ATC, pilot should follow the following speed control:  
Cross FLASH/15 track miles from touchdown at 200-180 KT IAS;  
Cross DINKY at 180 KT IAS;  
Cross FAP/FAF at 160-150 KT IAS.
- If unable to comply with item 1, pilots shall advise ATC in advance.
- ATC instruction: "Cancel speed restriction below 10,000" does not cancel the Approach Speed Control.
- Approach Speed Control should be canceled by ATC instruction: "Cancel Approach Speed Control".

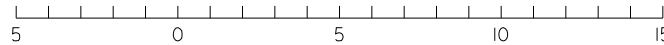


MISSED APCH:  
CLIMB ON HDG 234 UNTIL ICJN 9.6D,  
THEN TURN RIGHT DIRECT TO SEDUM,  
MAINTAIN 3000 AND HOLD.

GP 3°  
RDH 55



NM FROM ICJN



**MINIMA (OCA IN FT, VIS IN M, OCH IN FT)**

CATEGORY	A	B	C	D
STRAIGHT IN	206/RVR300 110	224/RVR300 128	235/RVR300 139	250/RVR300 154

NOTE  
1. CIRCLING NOT AUTHORIZED.  
2. ATS SURVEILLANCE REQUIRED FOR AUGUR TO FLASH AND MISSED APCH SEGMENTS.

\*DME REQUIRED.

CHANGES: NEW PAGE NUMBER, UPDATE RESTRICTED AREA VERTICAL LIMITS REPRESENTATION